

CHIENS GUIDES PARIS
pour aveugles et malvoyants

Guide dog in the City of Paris

Marc BLONDOT
GDMI, aftercare service referent



CHIENS GUIDES PARIS
pour aveugles et malvoyants



- 25 years of history
- Between 45 and 50 dogs a year
- More than 300 dogs in service
- Multidisciplinary staff
- Network of volunteers

Subject of study : commuter train in rush hours can be a hostile situation...



Different patterns

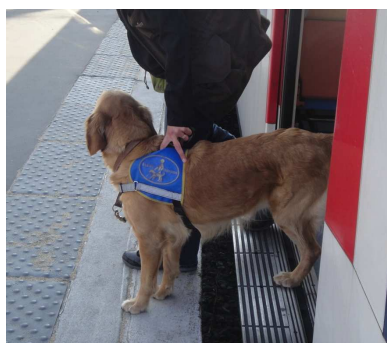
- 1 - train « stray voltage » (escalators) > kinæsthetic
- 2 - environment (in and out from the train) : large crowd of people = physical abuse > kinæsthetic
- 3 - « smell » from the environment (axle grease, urine, etc.)
- 4 - noise of the train
- 5 - vision of the train
- 6 – communication with the handler (and later the GDO : matching responsibility from GDS)

But $1 + 2 + 3 + 4 + 5 + 6 = \text{HOSTILE}$! Not only one pattern but several.

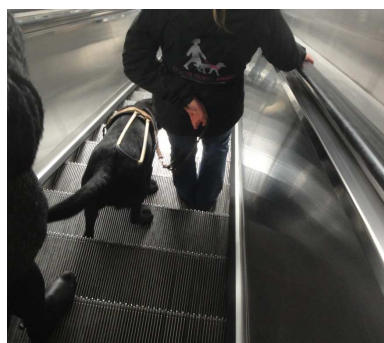


Stray voltage (physical attack)

When marking the door



... or escalator



Guiding = vigilance



Attacks on his body :

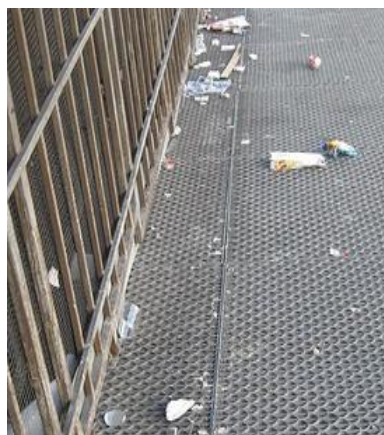
- impacts,
- watchfully,
- bags, suitcases, spinner luggage,
- in the corridors or in the trains,
- find the balance between hypervigilance and hypersensitivity!



« Smell » from the train and environment

Dirty platforms or corridors

- + Axle grease,
- + Urines,
- + Food on the ground or in hands,
- + (In the past, we had problems with some butcher's shop.)



Noise of the train



- The handler must talk louder
- Voice impact from the handler is reduced,
- Train coming on his back can be a terrible surprise!



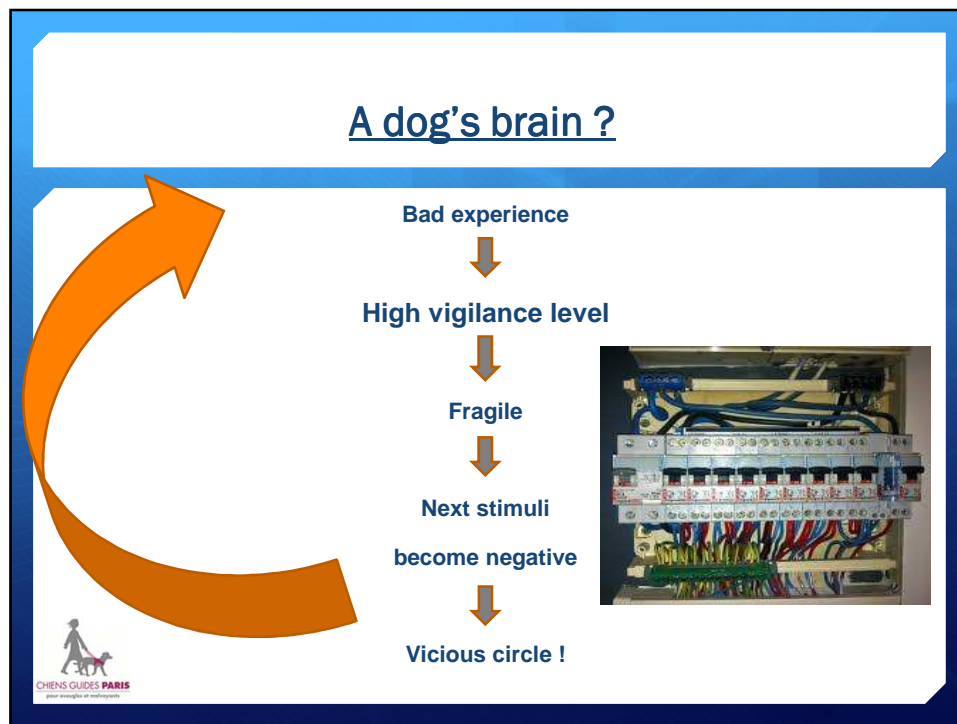
Vision of the train : visual discrimination



Relation - emotional transmission with the handler


- + handler stressed = dog stressed
- + Same sort of noise aggression for the handler
- + Harder verbal communication (louder) so needs more physical, harness or leash communication = not so peaceful !
- + Dog's disturbed, high level breath, yawn





A hostile place to become a not-hostile place

- ✓ Prepare dogs about this hostile environment to become common
- ✓ Puppies : the main thing!
- ✓ First year : environmental discovers, puppy walkers
- ✓ Training, class at school and home
- ✓ Aftercare service : regularly, retired parisian dogs earlier (physically and mentally tired)



CHIENS GUIDES PARIS pour aveugles et malvoyants

Puppies : the main thing !



Until 3 months
and completely
supervised by
professionals!



Puppies programm

In the wheelbarrow, from 3 weeks in the school, with their mum, to outside situations like the market for example.

To discover different environments until vaccinations to be done.



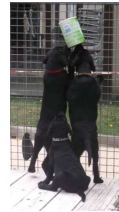
Breeding

Sensori-motor and social awakening for the puppies

Roads around the grass...



Smell boxes

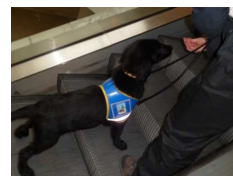


To be able to walk quietly
With the leash



Breeding

Sensori-motor and social awakening



In training



- + Positive training
- + From quiet stations outside to biggest ones inside
- + To repeat, straight, left, right etc.
- + With other dogs, food on the ground...
- + It never ends !



In training #2



- + Be smart!
- + Work with a blind fold.
- + Real conditions.
- + Final certification in rush hours!



THANKS...!

